

# Oil tank truck



LS20-10

## ■ Standard equipments



▲ Pump



▲ Manhole



▲ Emergency valve control lever



▲ 4-way cock



▲ 2-way cock



▲ Fire extinguisher

The vehicle in the photographs include optional equipments, special coloring and processing.

# Simple mechanism with high durability

## ■ Optional equipments



▲ Flow meter



▲ Hose reel



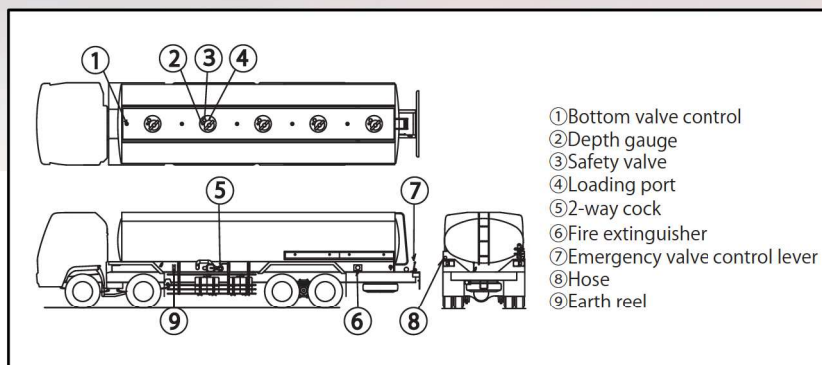
▲ Working lamp

## ■ Specifications

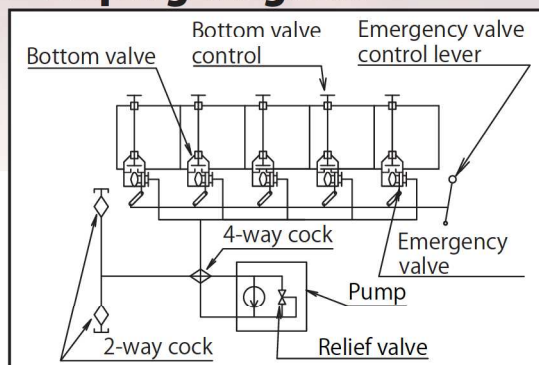
Model	LS02-30	LS04-30	LS08-10	LS10-10	LS14-10	LS18-10	LS20-10
Tank capacity (Liter)	2,000	4,000	8,000	10,000	14,000	18,000	20,000
Pump type	Vane		Gear				
Flow capacity	250L/min		600L/min				
Piping diameter	50mm		68~105mm				
Hose	2,000mm × 2pcs		3,000mm × 2pcs				
Manhole	Diameter 400mm						
GVW (kg)	5,000~6,000	7,500~9,000	11,500~14,000	16,000~20,000	20,000~26,000	26,000~30,000	30,000~35,000

The above mentioned figures are approximate.

## ■ Structure



## ■ Piping diagram



Note : Specifications and the other contents on this catalogue are subject to change without prior notice due to product improvement.

Product photos on this catalogue might include optional devices.

Not complied OIML R80

## Kyokuto Kaihatsu Kogyo Co., Ltd.

TOKYO OFFICE

3-15-10 ,Higashi-shinagawa, Shinagawa-ku, Tokyo, 140-0002, Japan

Telephone : +81(3)5781-9828 Facsimile : +81(3)5781-3438

E-mail : web-overseas@kyokuto.com

<http://www.kyokuto.com/>